

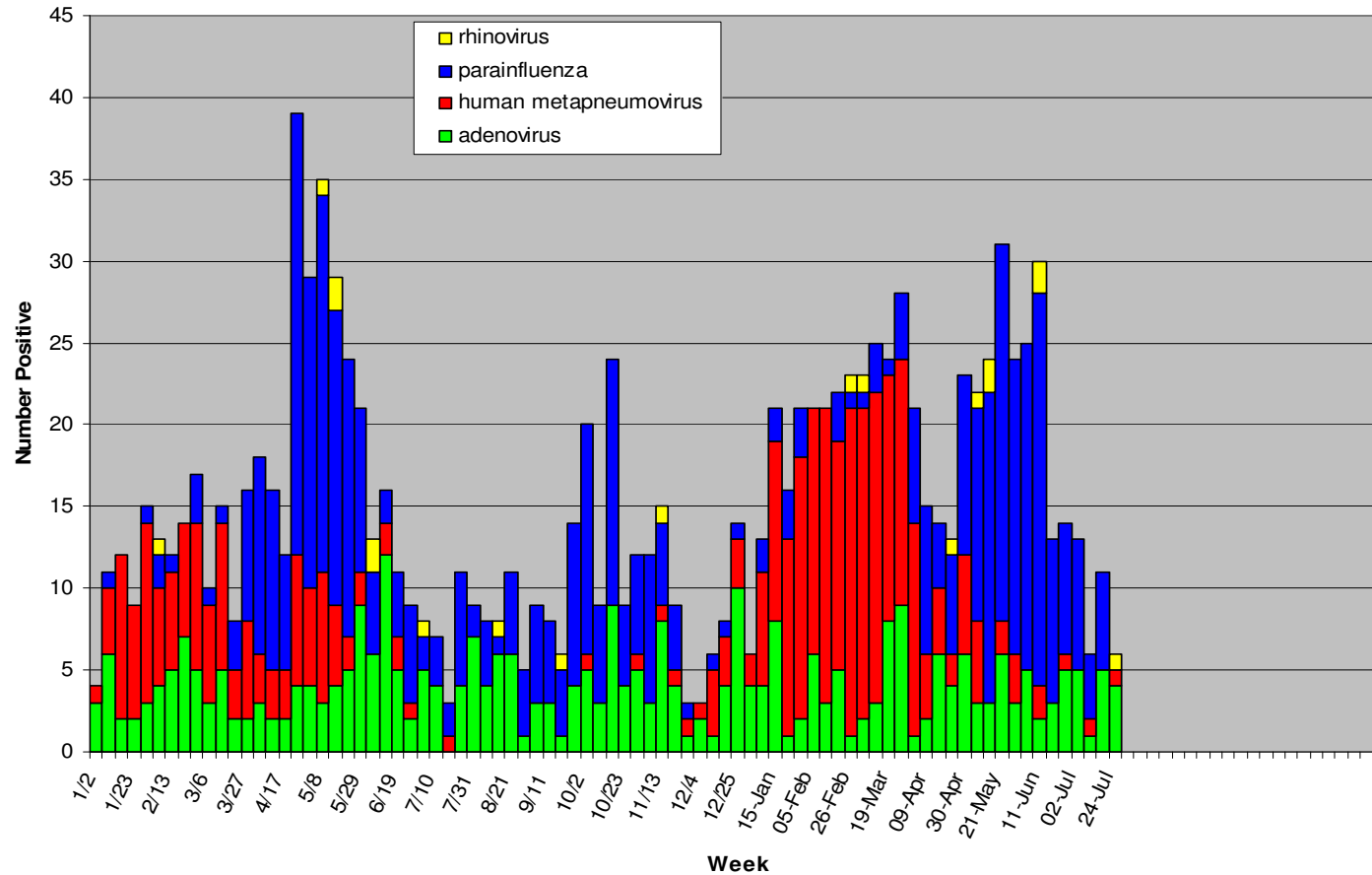
Microbiology and Virology
Department of Laboratory Medicine
700 Children's Drive
Columbus, Ohio 43205

**Weekly Respiratory Pathogens Report
2010 Respiratory Season**

Week Ending	RSV			Influenza					Pertussis		
	tested	positive	% positive	tested	positive A	positive B	% pos A	% pos B	tested	positive	% positive
07/24/2010	78	0	0.0	77	0	0	0.0	0.0	193	32	16.6
07/16/2010	75	0	0.0	74	0	0	0.0	0.0	198	32	16.2
07/09/2010	45	0	0.0	45	0	0	0.0	0.0	94	19	20.2
07/02/2010	70	1	1.4	70	0	0	0.0	0.0	127	21	16.5
06/25/2010	77	0	0.0	76	0	0	0.0	0.0	107	19	17.8
06/18/2010	77	0	0.0	77	0	0	0.0	0.0	91	13	14.3
06/11/2010	110	0	0.0	109	0	0	0.0	0.0	119	15	12.6
06/04/2010	101	0	0.0	99	0	0	0.0	0.0	109	12	11.0
05/28/2010	90	0	0.0	92	0	0	0.0	0.0	119	12	10.1
05/21/2010	116	0	0.0	114	0	0	0.0	0.0	116	16	13.8
05/14/2010	126	0	0.0	127	0	0	0.0	0.0	100	18	18.0
05/07/2010	116	4	3.4	117	0	0	0.0	0.0	77	7	9.1
04/30/2010	96	3	3.1	93	0	0	0.0	0.0	115	6	5.2
04/23/2010	91	3	3.3	90	0	0	0.0	0.0	110	11	10.0
04/16/2010	117	5	4.3	113	0	0	0.0	0.0	73	13	17.8
04/09/2010	127	9	7.1	130	0	0	0.0	0.0	94	10	10.6
04/02/2010	172	13	7.6	160	1	0	0.6	0.0	132	15	11.4
03/26/2010	182	22	12.1	174	0	1	0.0	0.6	125	10	8.0
03/19/2010	198	39	19.7	188	1	0	0.5	0.0	147	11	7.5
03/12/2010	212	46	21.7	199	0	0	0.0	0.0	128	9	7.0
03/05/2010	231	51	22.1	220	0	0	0.0	0.0	126	10	7.9

Page Down to See Data on Other Agents

2009-2010 Respiratory Positives (not including RSV Flu or B pertussis)



Page Down to See Data on Other Agents

2009-2010 RSV Influenza and B. pertussis

